

# PR10158

Frequency = 960-1260MHz

Pout = 51dBm

Gain (avg) = 29 dB

Vds = 28 VDC

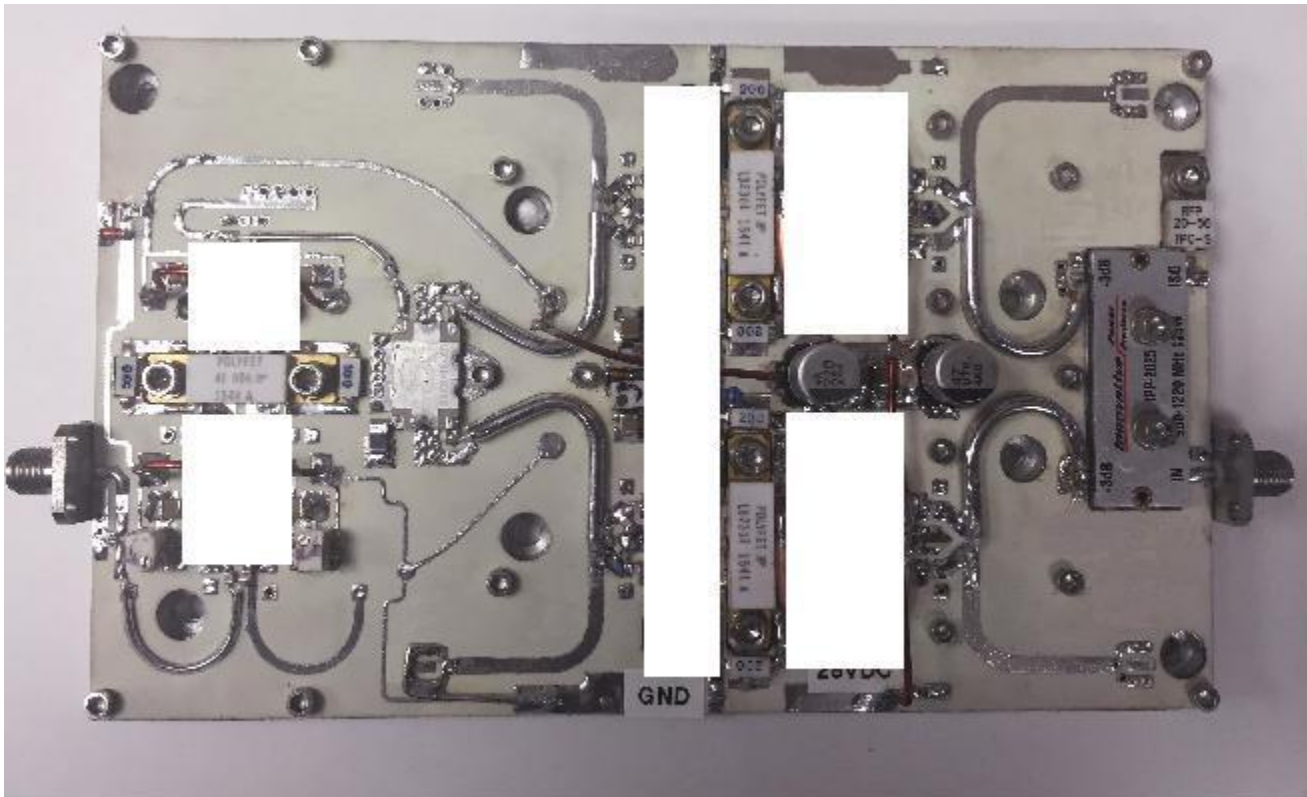
Idq = 0.8A → (0.4A+0.4A)

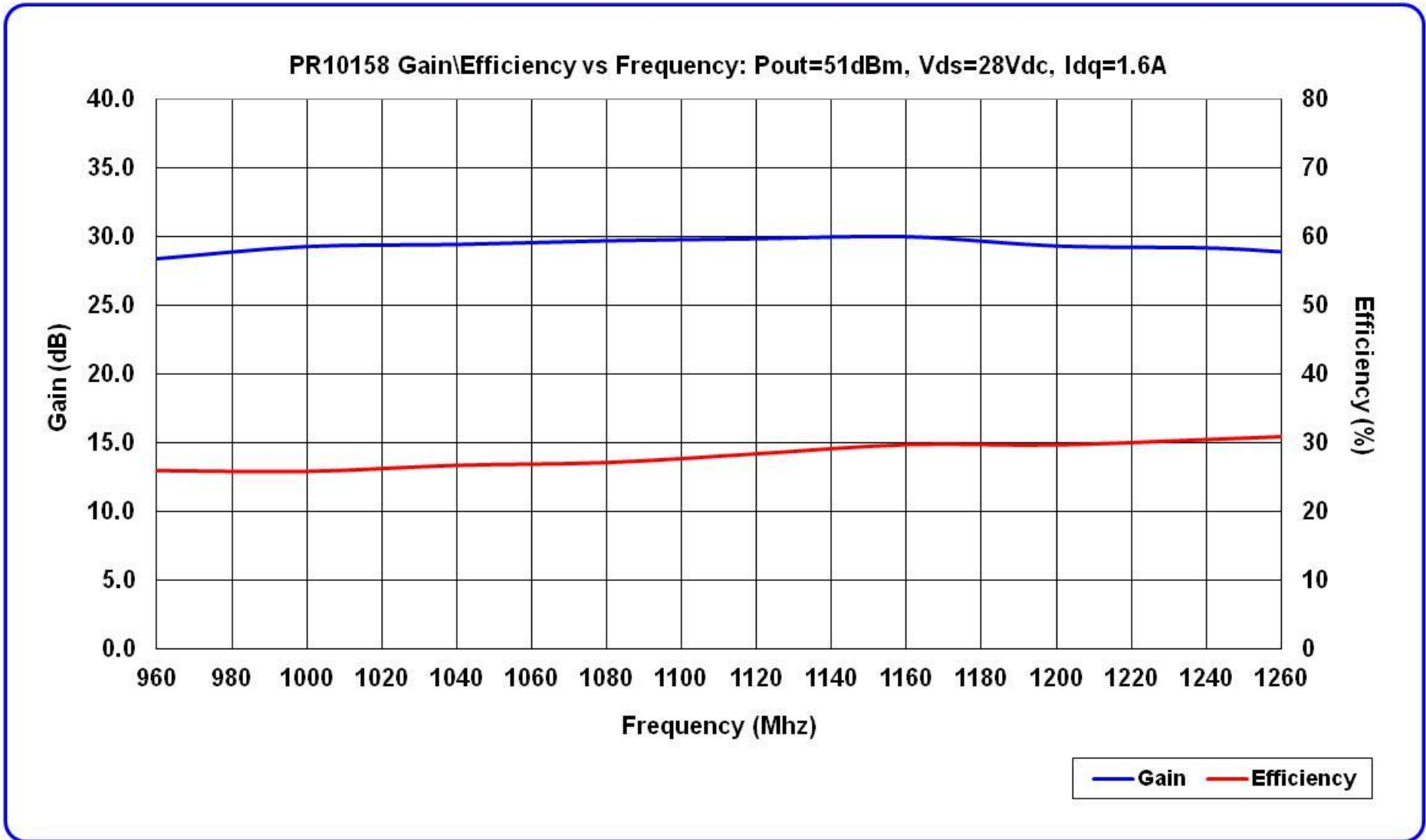
Efficiency = 26 to 31%

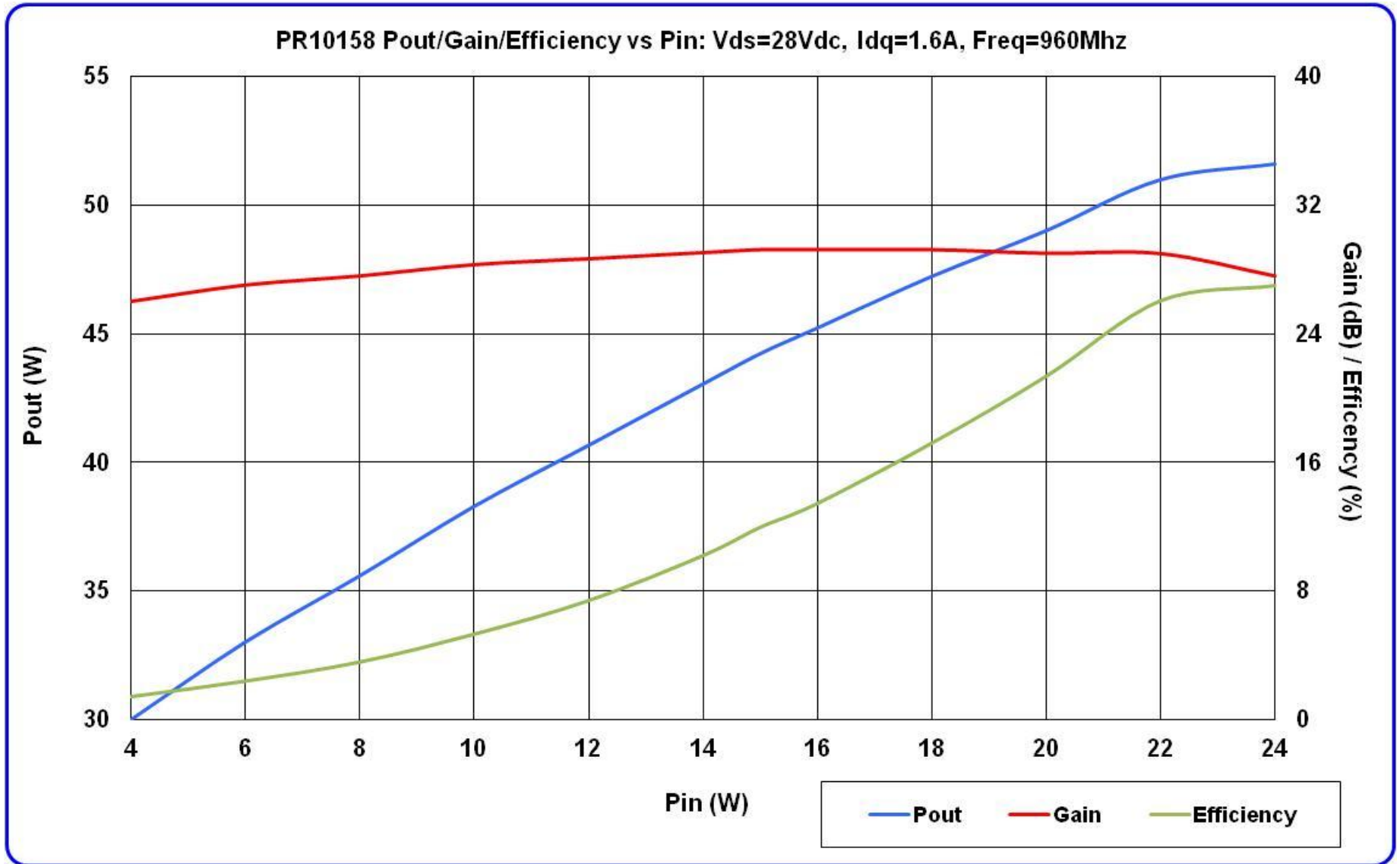
4E-006 → (LB2301 + LB2301)

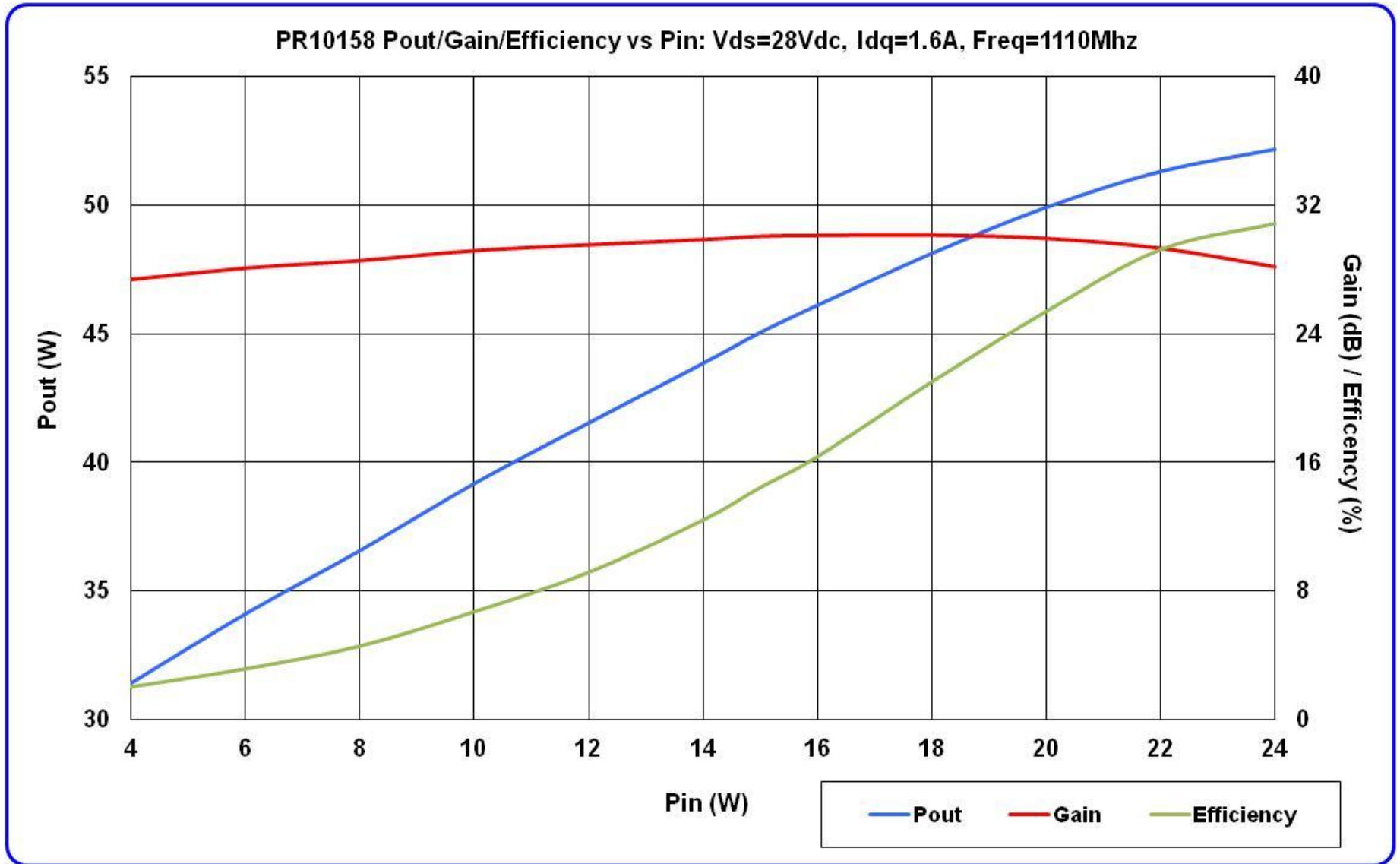
Dimension: 150mm(L) x 90mm(W)

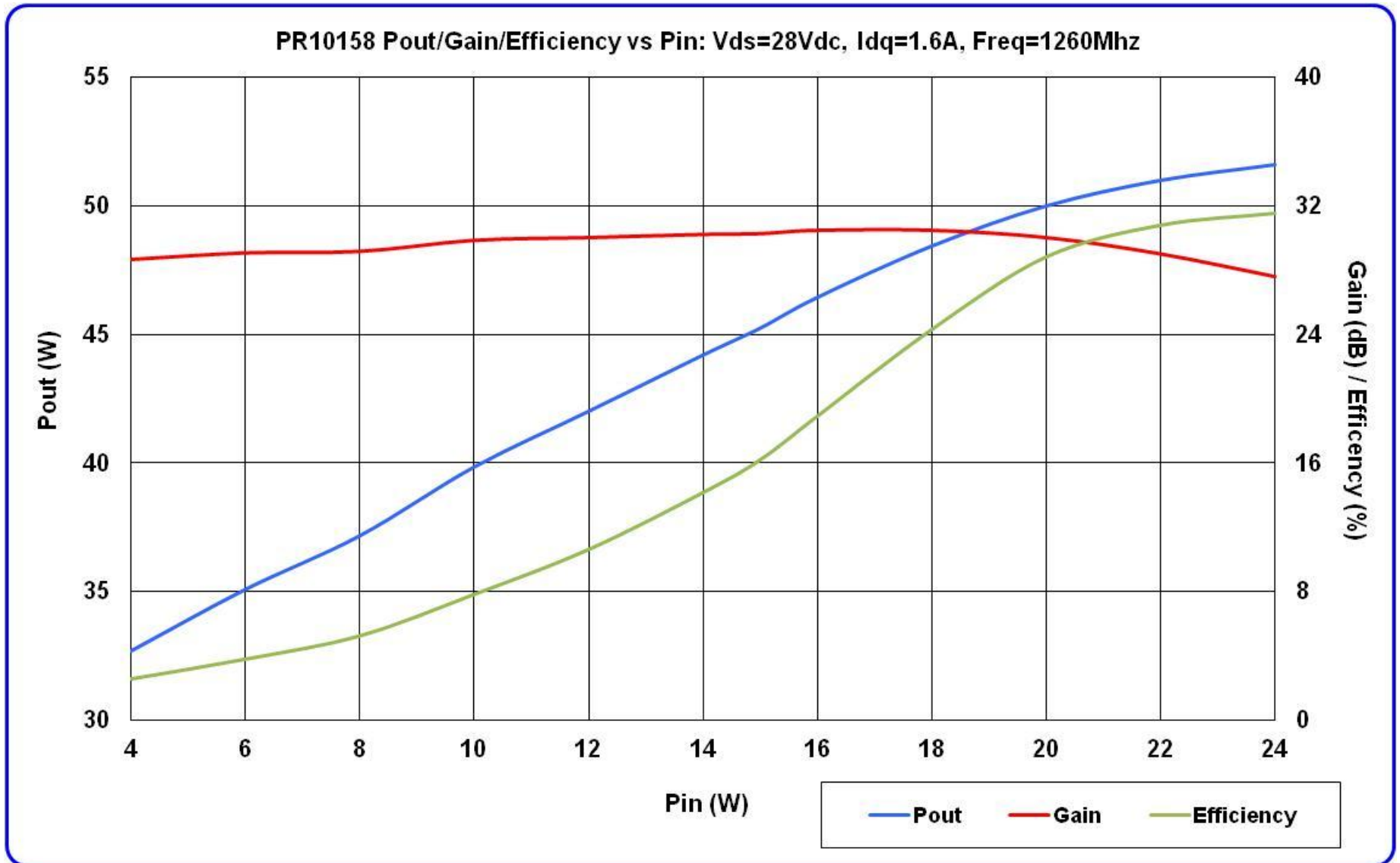
5.9”(L) x 5.54”(W)

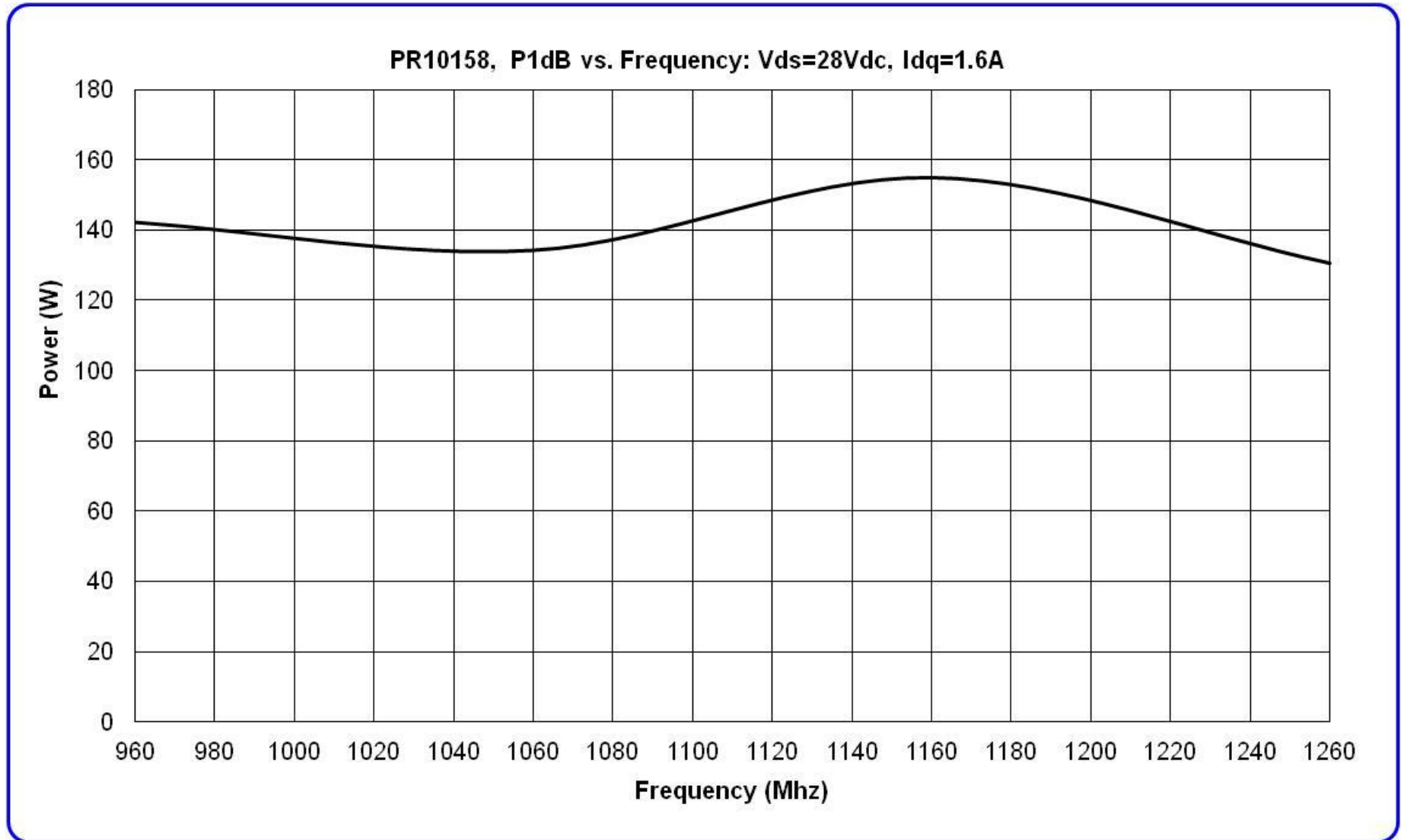


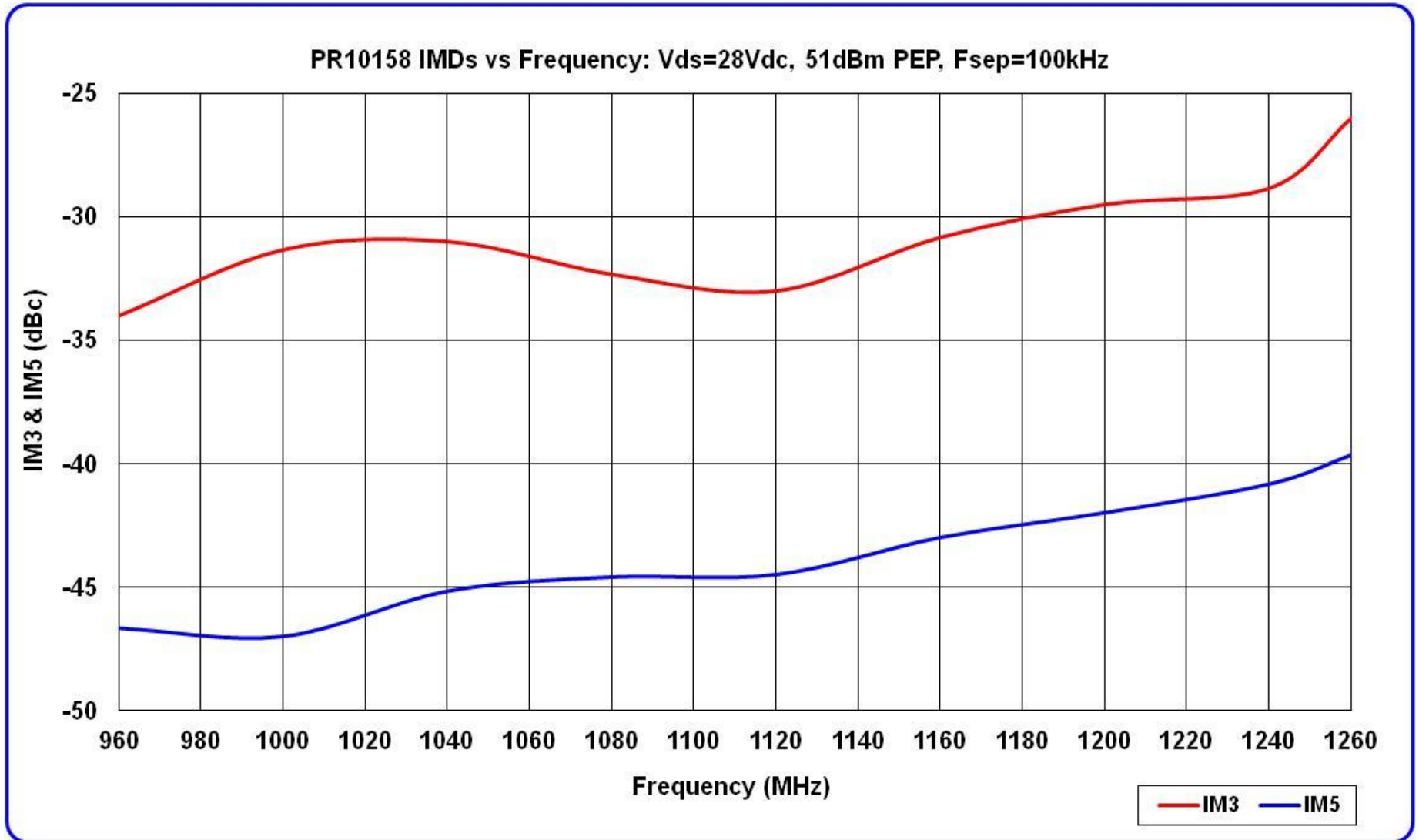


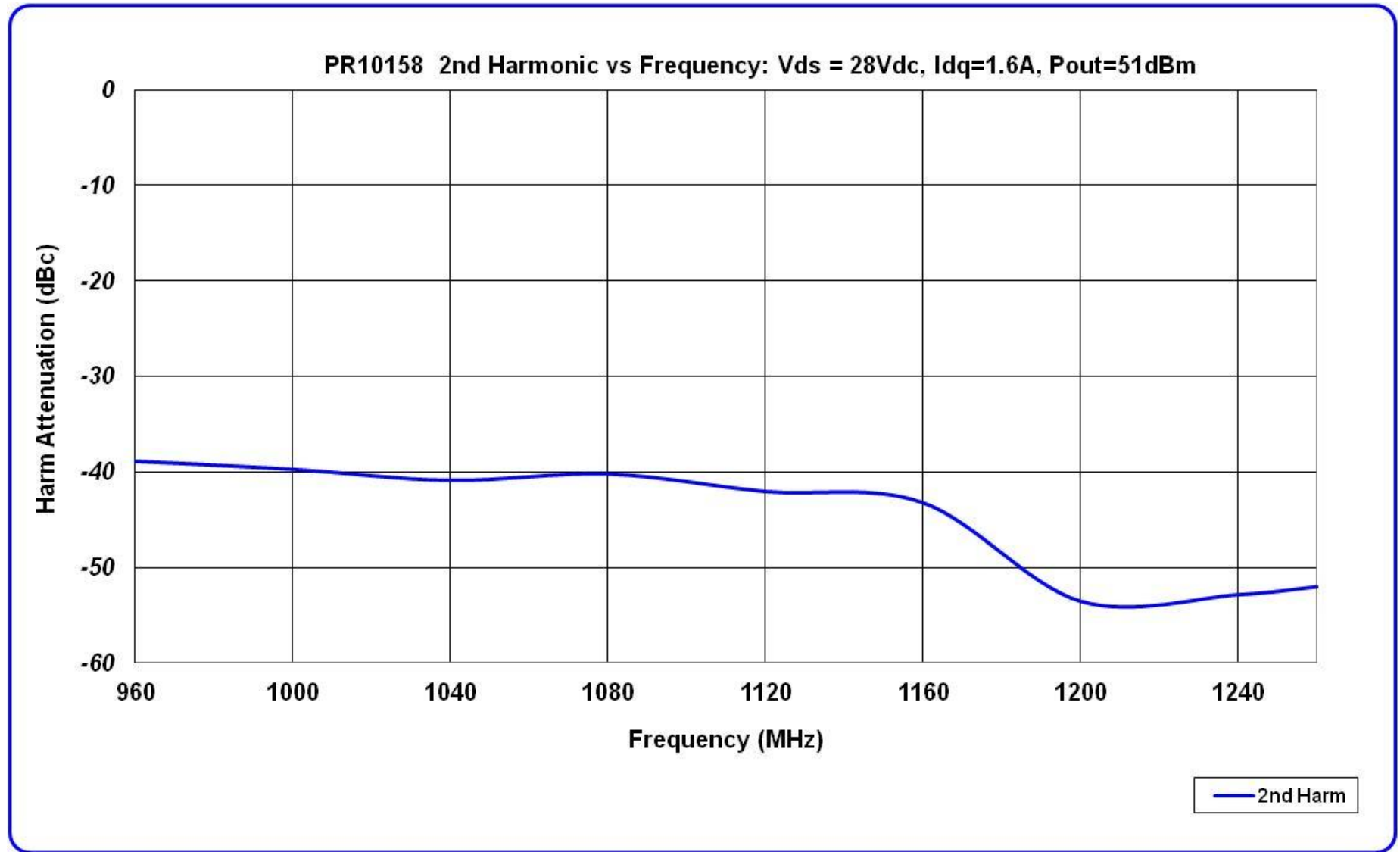














PR10158 Vds=28VDC, Total Idq=1.6A, Freq=960-1260MHz

