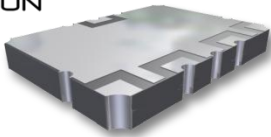


Y2D-900R

SURFACE MOUNT 2-WAY POWER DIVIDER

REV 1.0.0



APPLICATIONS

- Signal splitting/combining
- Intermodulation distortion measurements
- Gain/compression/isolation measurements
- Power monitoring
- Signal distribution for antenna arrays
- Antenna beam forming

FEATURES

- Broadband 700 - 1000 MHz
- High isolation
- High power (350W)
- Low insertion loss
- Low phase unbalance
- Surface Mountable
- Optimized for thermal and RF performance
- Dimensionally stable materials for best CTE match to board
- RoHS compliant

SPECIFICATIONS

TABLE 1: TYPICAL SPECIFICATIONS*

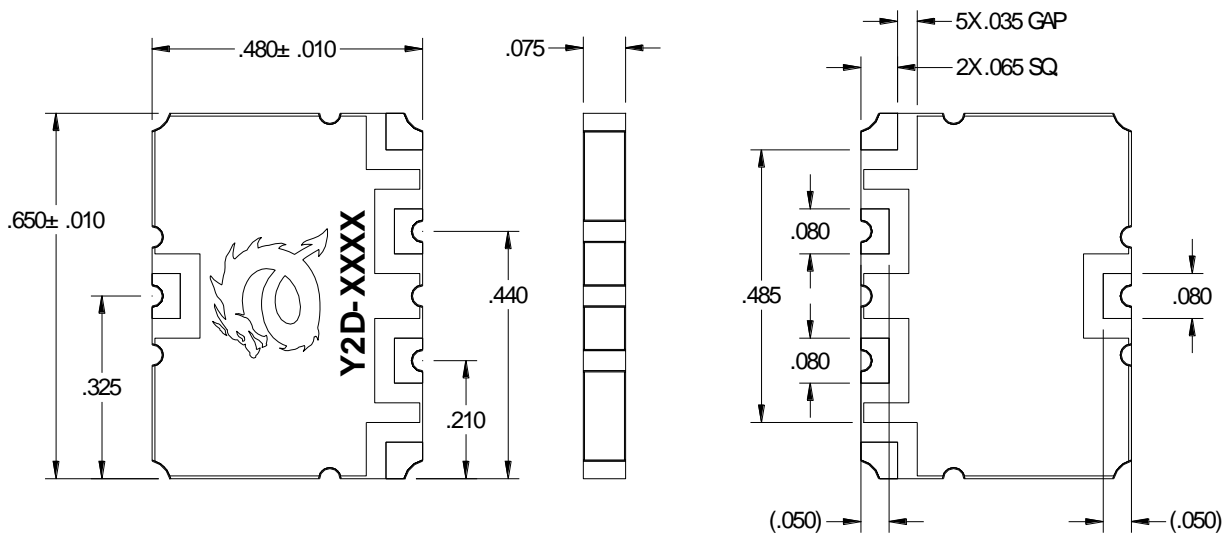
FREQ (MHz)	POWER† (W)	PART NUMBER	INSERTION LOSS (dB)	PHASE BALANCE (Deg)	ISOLATION Typical (dB)	VSWR	OPERATING TEMP (°C)	ΘJC (°C/W)
700-1000	350	Y2D-900R	0.15	± 2	20	1.35	-55 to +85	11.9

Y2D-900R does not include the resistive element. External resistor is required for operation.

* Units tested with small signal using Electro-Photonics test board at 25°C and standard 0805 100 Ohm resistor. Specifications subject to change without notice.

Power will be limited by the power handling of the chosen 100 Ohm resistor.

MECHANICAL OUTLINE

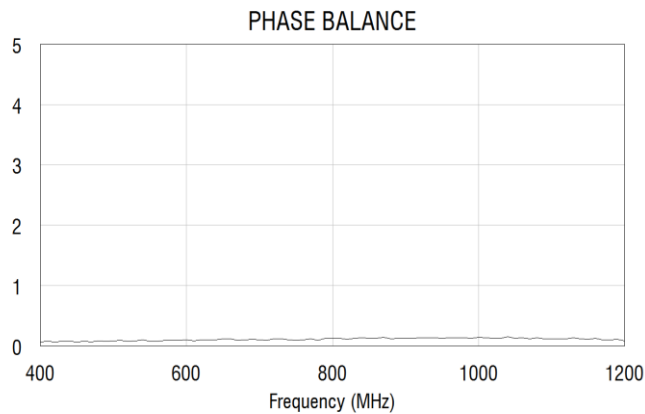
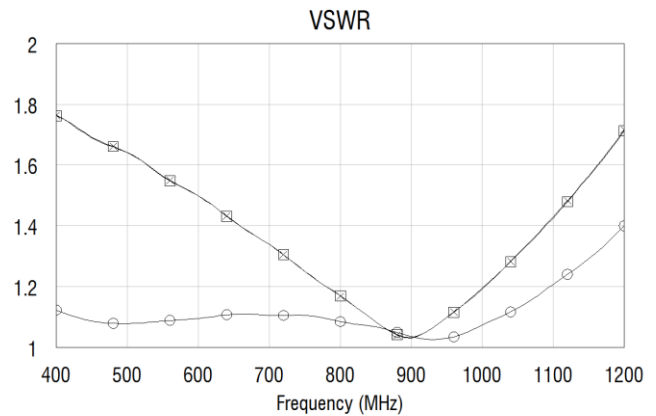
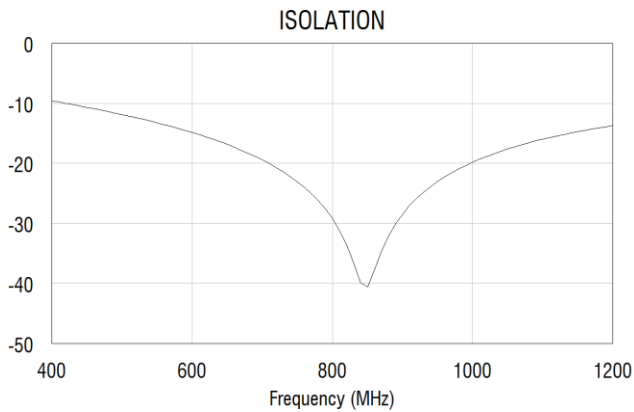
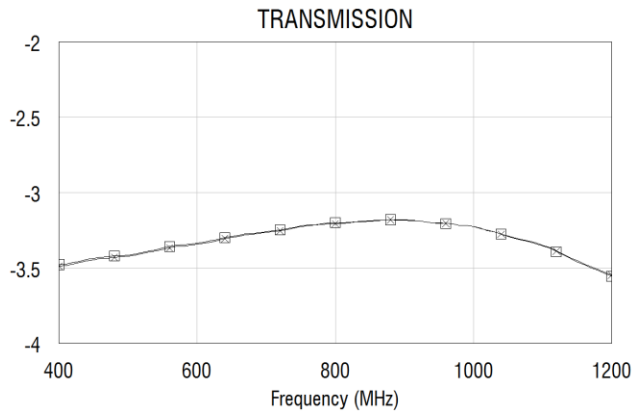


Y2D-900R

SURFACE MOUNT 2-WAY POWER DIVIDER

REV 1.0.0

TYPICAL PERFORMANCE

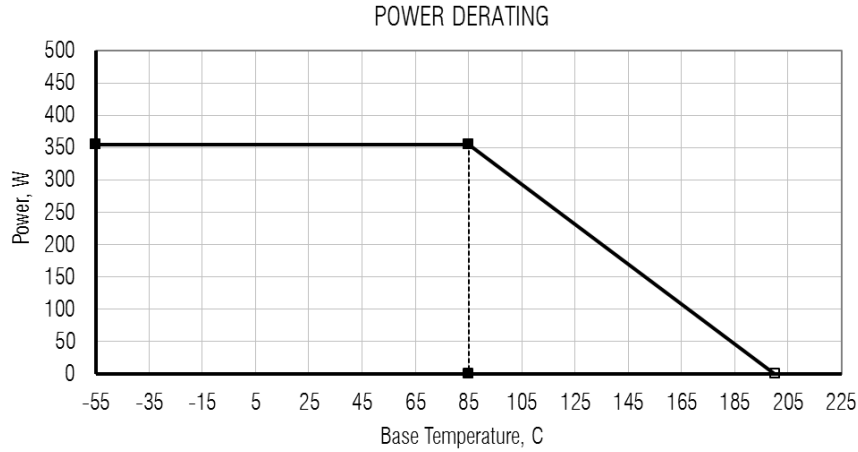


Y2D-900R

SURFACE MOUNT 2-WAY POWER DIVIDER

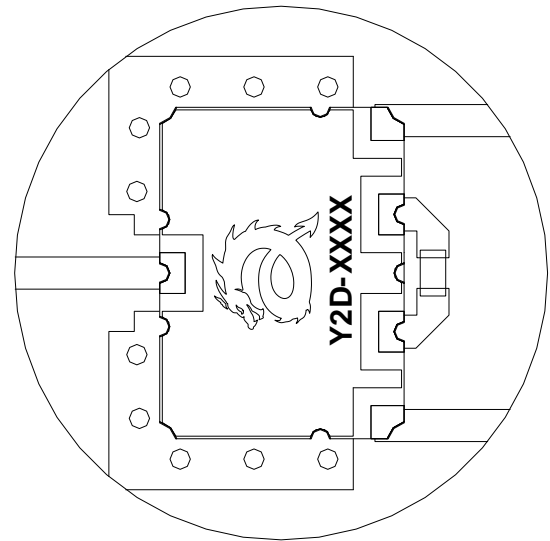
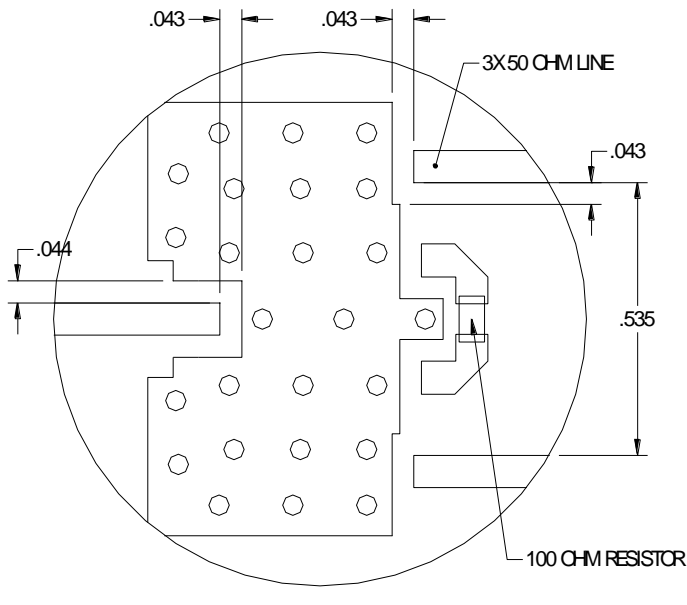
REV 1.0.0

POWER DERATING



MOUNTING FOOTPRINT

Electro-Photonics test board is designed using 30 mil RO4350B material. Land pattern design must be taken into consideration when using a different thickness and/or dielectric constant in order to achieve optimal performance.



Y2D-900R

SURFACE MOUNT 2-WAY POWER DIVIDER

REV 1.0.0

ORDERING INFO*

* Consult sales (sales@electro-photonics.com) for custom configuration, size, footprint, and/or specifications. Tape & Reel available upon request (with minimum order quantities).

Y 2 D - 9 0 0 R
① ② ③ ④

①	②	③	④
PRODUCT CODE	SIZE	FREQUENCY	PLATING
2-WAY POWER SPLITTER/COMBINER	A = .250 X .200 K = .283 X .197 B = .560 X .200 G = .560 X .350 D = .650 X .480 E = 1.00 X .500	MHz (SEE TABLE 1)	R = IMMERSION TIN