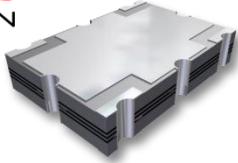


Q10HK-1900R

SURFACE MOUNT 10dB DIRECTIONAL COUPLER

REV 1.A



APPLICATIONS

- Signal sampling
- Signal injection
- Source leveling
- Signal isolation
- Power monitoring
- Reflection measurement

FEATURES

- Broadband 1500 - 2200 MHz
- High power
- Very low loss
- High directivity
- Flat coupling
- Compact and low profile
- Dimensionally stable materials for best CTE match
- Lead-Free

SPECIFICATIONS

TABLE 1: TYPICAL SPECIFICATIONS*

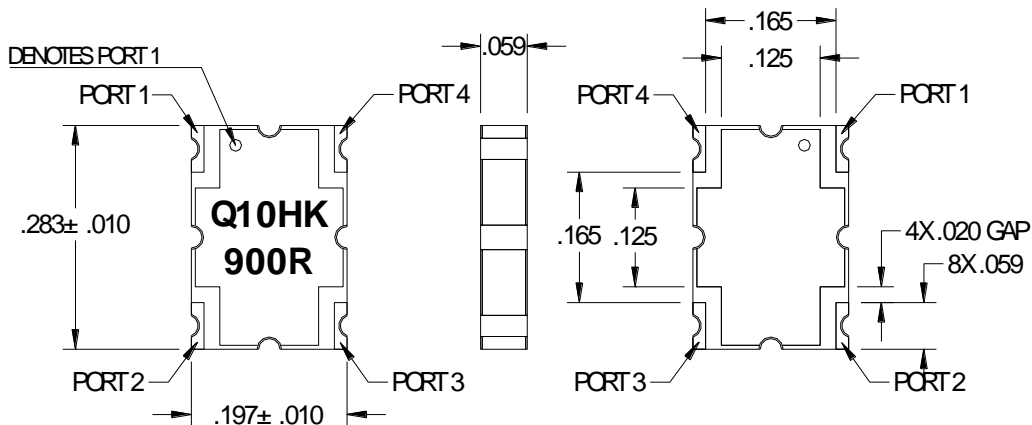
FREQ (MHz)	POWER (W)	PART NUMBER	INSERTION LOSS (dB)	COUPLING (dB)	DIRECTIVITY (dB)	VSWR	OPERATING TEMP (°C)	ΘJC (°C/W)
1500-2200	50	Q10HK-1900R	0.15	10 ± 0.5	20	1.20	-55 to +85	28.5

* Units tested with small signal using Electro-Photonics test board at 25°C. Specifications subject to change without notice.

† Please consult sales (sales@electro-photonics.com) for custom footprints, sizes, and/or specifications.

MECHANICAL OUTLINE

* Dimensions are *inches*.

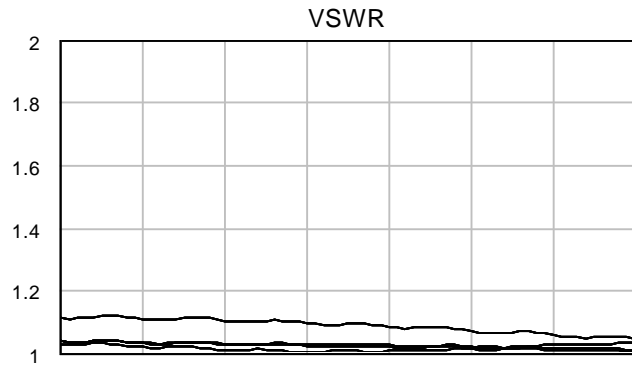
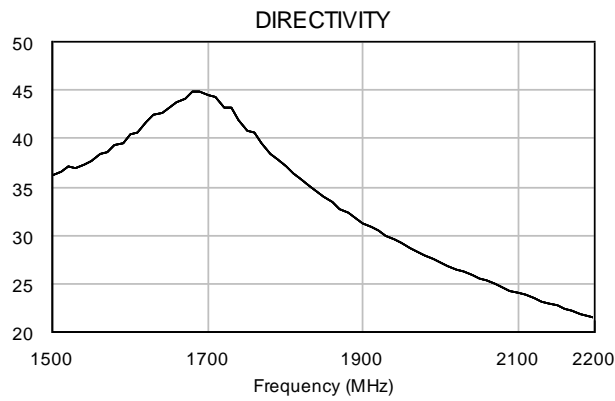
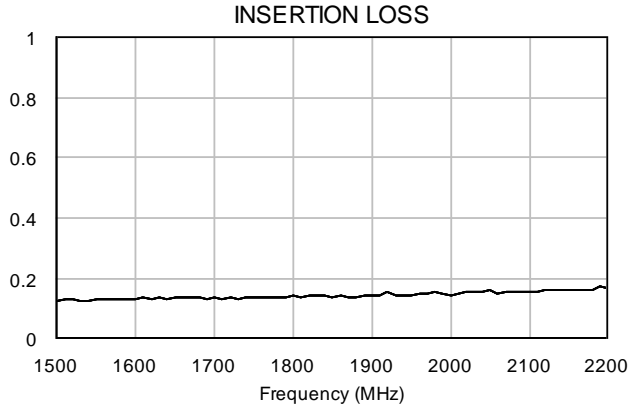
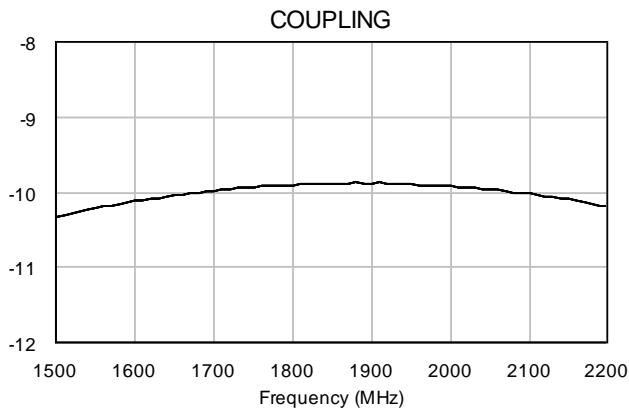


Q10HK-1900R

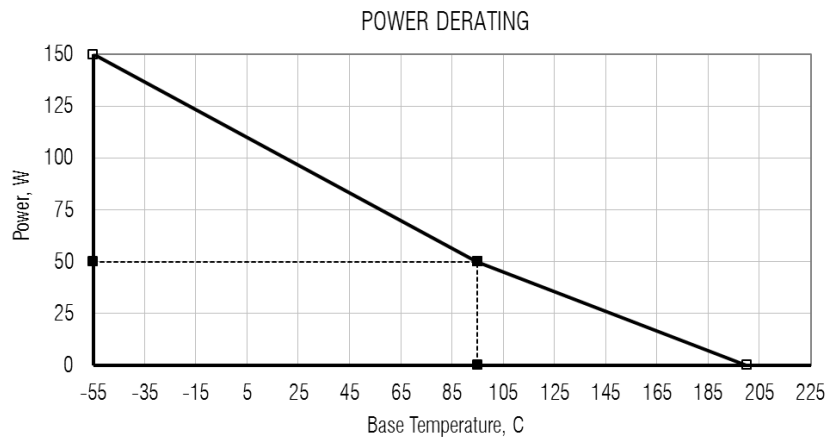
SURFACE MOUNT 10dB DIRECTIONAL COUPLER

REV 1.A

TYPICAL PERFORMANCE



POWER DERATING

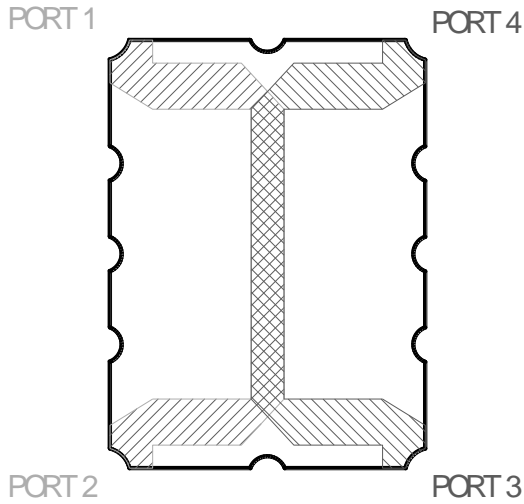


Q10HK-1900R

SURFACE MOUNT 10dB DIRECTIONAL COUPLER

REV 1.A

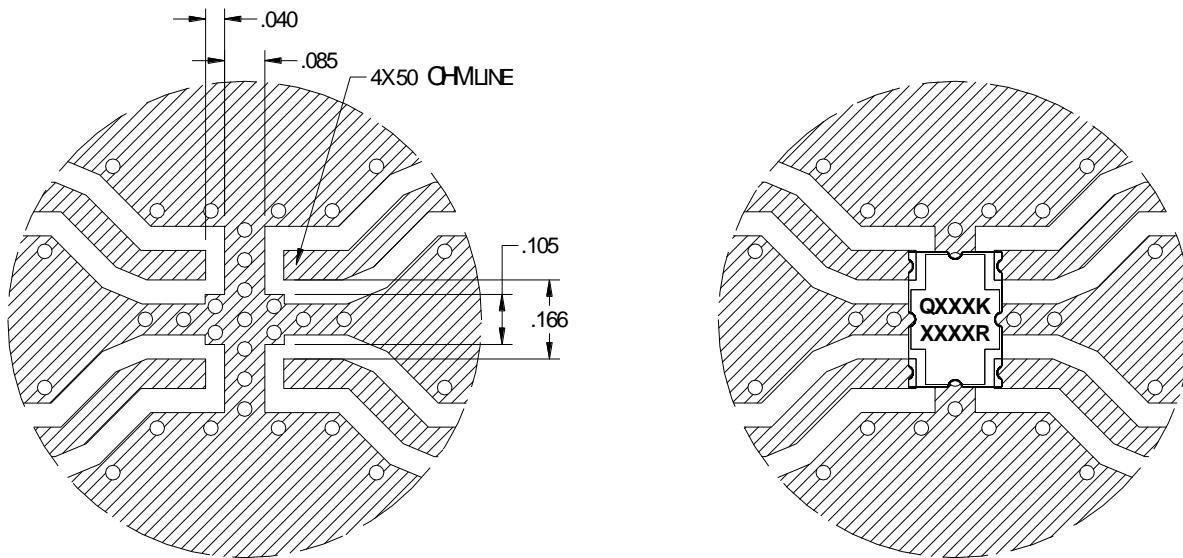
PIN CONFIGURATION



PORT 1	PORT 2	PORT 3	PORT 4
IN	DIRECT	ISOLATED	COUPLED
DIRECT	IN	COUPLED	ISOLATED
ISOLATED	COUPLED	IN	DIRECT
COUPLED	ISOLATED	DIRECT	IN

MOUNTING FOOTPRINT

Electro-Photonics test board is designed using 30 mil RO4350B material. Land pattern design must be taken into consideration when using a different thickness and/or dielectric constant in order to achieve optimal performance.



Q10HK-1900R

SURFACE MOUNT 10dB DIRECTIONAL COUPLER

REV 1.A

ORDERING INFO*

* Consult sales (sales@electro-photonics.com) for custom configuration, size, footprint, and/or specifications. Tape & Reel available upon request (with minimum order quantities). Add dash T (- T) at the end of the part number for tape and reel.

Q 1 0 H K - 1 9 0 0 R
① ② ③ ④

①	②	③	④
PRODUCT CODE	SIZE	FREQUENCY	PLATING
10dB DIRECTIONAL COUPLER	A = .250 X .200 K = .283 X .197 B = .560 X .200 G = .560 X .350 D = .650 X .480	MHz (SEE TABLE 1)	R = IMMERSION TIN